

# LR Series

World  
Lasers\*



## LR2012 laser cutter / engraver

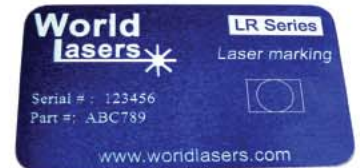
- 20" x 12" Work Area
- 60 Watt Laser
- Touch Screen
- Coaxial Air Nozzle
- Sharp 1000 DPI Resolution
- Fast 60 ips
- Easy to Operate
- Affordable
- Quality Service & Support
- Toll-Free Technical Support

## LR2012

The LR2012 is a reliable laser engraver and cutter with an affordable price tag for the technology. The laser software is very simple and can import popular file formats from your favorite design software.

Laser engraving has many applications including identification, marking, signage, and decoration. Engrave photos and logos on a variety of materials.

Commonly processed materials include acrylic, anodized aluminum, ceramic, cloth, coated metals, cork, delrin, fiberglass, glass, leather, marble, matte board, melamine, mylar, paper, pressboard, rubber, wood, and wood veneer.



\* Identification Tag (Anodized Al)



\* Engraved Photograph (Marble)



\* Mixed Vector and Raster (Wood)



[www.worldlasers.com](http://www.worldlasers.com)

# LR Series

World  
Lasers™



## LR2012

laser cutter / engraver

### FEATURES

<b>Product</b>	Enclosed laser engraver/cutter
<b>Work Area</b>	20" x 12" x 16" or 20" x unlimited x 5/8" 16" Power table height adjustment
<b>Laser</b>	60 Watt CO <sub>2</sub> 10.6 micron 2" Focus lens standard (others optional)
<b>Speed</b>	60 ips
<b>Resolution</b>	Adjustable to 1000 dpi
<b>Interface</b>	USB port to user PC Touch screen panel On board program storage
<b>Compatibility</b>	Windows 2000/XP CorelDRAW (bmp, dxf) Vector, Raster, mixed mode
<b>Warranty</b>	One year parts and labor. Excludes consumables.
<b>Includes</b>	Communications cable, casters, software, cooling unit, user manual
<b>Enclosure size</b>	54" x 40" x 42" (W, D, H)
<b>Weight</b>	190 lbs
<b>Power</b>	110-120 V 50-60 Hz 15 A
<b>Options</b>	Vector cutting table, Rotary attachment, Exhaust blower, Air compressor

*Due to World Lasers commitment to continual improvement, specifications are subject to change.*

#### **World Lasers, Inc.**

40 Aero Road, Bohemia, NY 11716

(800) 648-5164 (484) 359-8906

[www.worldlasers.com](http://www.worldlasers.com)

